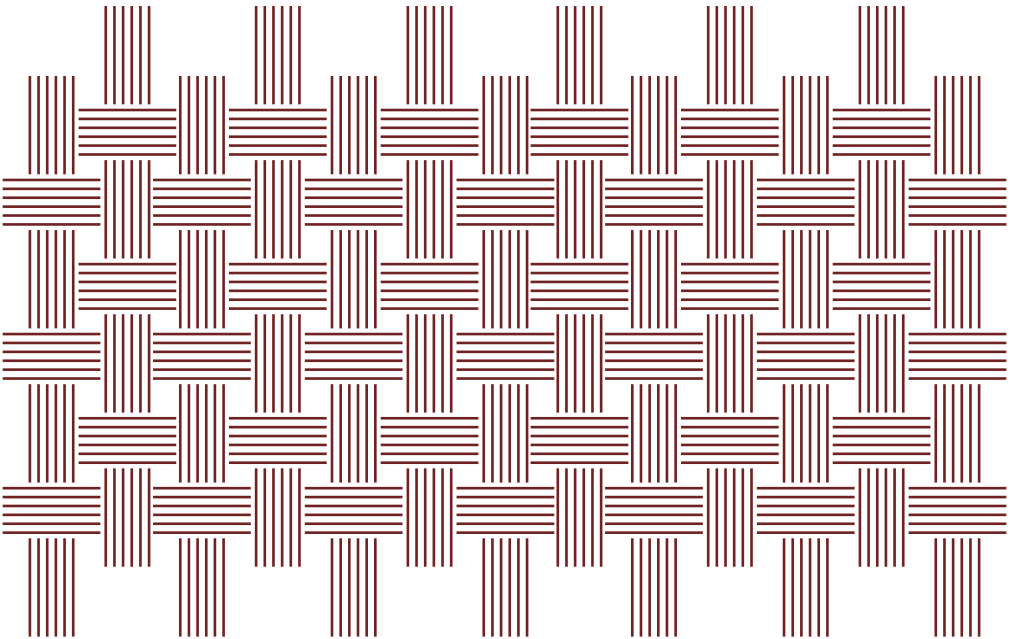


L U T E C A

*Contemporary Design
for a Modern Tropical
Lifestyle*



**Timeless Design
Influenced by Latin
American Architecture
for Indoor Outdoor**

Luteca stands at the design crossroads of European innovation and Mexican heritage, past and present. Bringing together *diverse cultural strands* and historical influences, our aim is to create furniture with *a uniquely Mexican soul animated by a global, cosmopolitan spirit.*

We celebrate a holistic vision of *Mexican artistry* in all its nuanced *complexity and brilliance.*

Luteca was founded in New York in 2015 by European husband and wife, Amanda and Sebastien Reant with the explicit intention of resuscitating under-recognized Mexican modernist classics.



Renowned Mexican architect and designer Pedro Ramírez Vázquez was a powerful advocate for Mexican design style. Looking to the 'cultural constants', as he called it, of iconography, symbols and references associated with Mexican culture, he recurrently integrated traditional facets into landmark projects, such as the Museum of Anthropology and the Basilica in Mexico City.

An urban planner, writer, designer and public official, Ramírez Vázquez earned a unique perspective through administering the design and construction of schools across Mexico. During the late 1950s, he collaborated on a design for a series of pre-fabricated rural schools, which was adopted by Unesco and implemented in 17 countries around the world with 150,000 units installed. The concept won the grand prize at the XXII Milan Triennale in 1960. Following this, he was involved in not only designing and restoring several major museums in Mexico, but appointed the Secretary of Human Settlements and Public Works, where he facilitated major improvements and additions to public infrastructure. Some of his notable achievements include designing the Azteca Stadium with an overhanging roof of laminated steel (in time for the 1968 Olympic Games) and the Basilica of Guadalupe, which boasts a reinforced concrete roof covered in layers of copper sheeting.

Little known but also worthy of admiration are his works as an industrial designer of furniture, glass and silver that show his references to ancient Mexico, but always under the gaze of Modernity. He died on his birthday in 2013 after seven decades of creative activity and leaving a legacy that became a reference for new generations.



**Pedro
Ramírez
Vázquez**

1919–2013

Our Classics Collection brings exceptional examples of 20th Century creativity *back into the canon of iconic design*.



CP3
Clara Porset

Masterworks of 20th Century Mexican Design



Equipal Counter Stool
Pedro Ramírez Vázquez



Alacran Chaise
Michael van Beuren

Representing some of the most important designers and architects of that era—*visionaries who symbolized the innovative spirit of modern Mexico during their lifetimes*—much of this work rarely seen or given the international acclaim it deserves, until now.



Miguelito Dining Chair
Michael van Beuren



Butaque Chair
Clara Porset



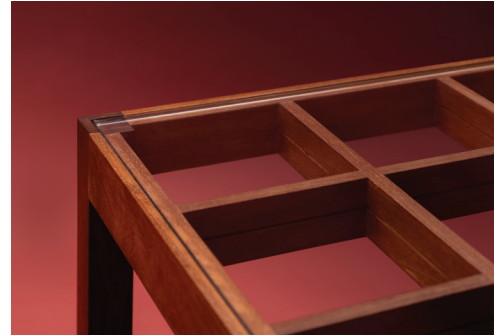
Miguelito Armchair
Michael van Beuren



Butaque Clasica
Clara Porset Dumas



Line Chair
Michael van Beuren



Domus Table
Michael van Beuren



Woven Credenza
Michael van Beuren

The pieces in our *Classics Collection* trace how the *European ideals* of the International Style and mid-century modern design movements were *reinterpreted through a uniquely Latin lens*.

Our licensed re-editions, now available across the world, *pay homage to those trailblazing talents* by preserving the spirit, form, and *impeccable craftsmanship that was originally intended*.

Michael van Beuren was born in New York and studied architecture at the prestigious Bauhaus school in Germany, under Ludwig Mies van der Rohe and Josef Albers until its closure in 1933. He moved to Acapulco at the end of 1936, where he oversaw the interiors of the bungalows at the renowned Flamingo Hotel in 1937, and quickly became a formative member of the Mexican Modernism movement.

By 1938, Van Beuren began focusing on furniture design, working with a fellow Bauhaus colleague, Klaus Grabe, to create modern and affordable pieces. Inspired by the local culture and craftsmanship, the duo applied quintessentially modernist design principles to popular Mexican mainstays, such as woven reclining chaises and wooden dining chairs. Their approach was a success; the pair was one of the winners of a 1941 competition organised by MoMA targeting teams from Latin America called Organic Design in Home Furnishings, which catapulted them to wide regard. In the following years, Van Beuren founded his furniture label DOMUS with his brother Freddie, an engineer, which became synonymous with well crafted, modernist design that garnered fans both in Mexico and America. Along with his own designs, DOMUS also produced work by Clara Porset, a friend and contemporary of Van Beuren's. Michael van Beuren continued designing until eventually selling the company at the end of the 1970's. He retired to Cuernavaca, where he died in 2004.

Today his furniture represents one of the most fruitful moments of furniture production in Mexico and has become an essential part of Mexican 20th century design history.



**Michael
van
Beuren**

1911-2004

A pioneer of modern furniture and interior design in Mexico, the Cuban-born designer Clara Porset spent her early years studying art, architecture and design at Columbia University in New York, and later at the Sorbonne University in Paris.

Known for her radical politics, Porset was expelled from Cuba multiple times and ultimately settled in Mexico in 1935, where she spent much of her career investigating the intersection of tradition and modernity. She frequently visited local craft workshops, occasionally with Josef and Anni Albers who visited her annually, and used this research to inform her furniture designs for architects, including Luis Barragan, Enrique Yanez and Max Cetto.

A fierce proponent of historical craft traditions, she developed contemporary versions of classic Mexican vernacular forms, such as the butaque chair, a lowslung, wooden frame chair —itself a hybrid of Spanish and Pre-Colombian archetypes. Like Michael van Beuren, she also won a prize at the Organic Design in Home Furnishings competition in 1941, which she entered with her husband, the Mexican artist Xavier Guerrero, but he was given sole-credit for the design in the exhibit's publication.

By the 1950s, Porset was a fully recognized figure in the Mexican design scene; a visionary designer and curator known for her continual efforts to reconcile traditional craftsmanship with industrial manufacturing. She dedicated her life to teaching, which she did until her death in 1981, leaving an indelible mark on both her students and the history of Mexican design.



**Clara
Porset
Dumas**

1895-1981

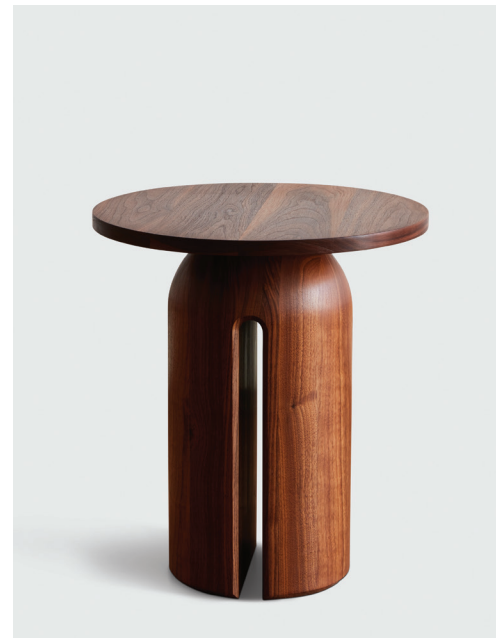
Preserving *Historical Crafts*
and *Artisinal Know-how*.



Oco Side Table
Jorge Arturo Ibarra

Our Contemporary Collection
represents an evolution of the
guiding principles of *Bauhaus*
design and *Pre-Hispanic*
Brutalism in modern terms.

Also infused with references of Pre-Colombian
civilizations, it has a warm and distinctly
cosmopolitan flavor that is impossible to
duplicate elsewhere.



Oco Side Table
Jorge Arturo Ibarra



Tolo Side Table
Luteca Studio



Oco Dining Table
Jorge Arturo Ibarra



Eno Desk
Luteca Studio



Limantour Bar Stool
Luteca Studio



Torres Sofa
Luteca Studio

Exuding a universal elegance while maintaining a distinct Mexican flavor, this collection distills the singular creative spirit of Mexico in the 21st century.



Ero Dining Table
Luteca Studio



Eugenio Dining Chair
Luteca Studio



Augusto Credenza
Jorge Arturo Ibarra



Dorica Daybed
Jorge Arturo Ibarra



Ato Sofa
Jorge Arturo Ibarra



Cortes Chair
Luteca Studio

Whatever it is we are making, our core values drive each piece: revaluing historical design, preserving deep-rooted artisanal know-how combined with regenerative materials and an inclusive culture that embraces the warmth of generous hospitality.



Woven Tute Bench



Woven Resin Small Stool

Our Woven Collection: *Historical Design and Indigenous Traditions, Innovatively Recrafted for Exteriors.*



Our collection has been developed explicitly to be suitable for both indoor and outdoor. This is a key element of the Latin American and Mexican lifestyle and what makes the architecture styles of this region so recognizable.



Woven Tute Sofa



PARIS

7 Rue de la Banque
75002, Paris
France
paris@luteca.com
+33 (0)1 40 15 00 10

NEW YORK CITY

New York Design Center
200 Lexington Ave, Suite 1608
New York, NY
10016, USA
nyc@luteca.com
+1 (833) 758 83 22

LOS ANGELES

6201 Santa Monica Blvd.
Los Angeles, CA
90038, USA
la@luteca.com
+1 (323) 380 76 43

MEXICO CITY

cdmx@luteca.com
+52 56 2167 9990



LUTECA.COM
@LUTECAFURNITURE